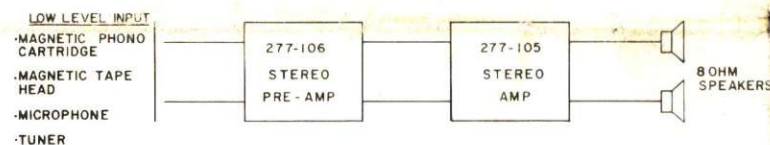


STEREO PREAMPLIFIER

This PROJECT BOARD is designed for use with the STEREO POWER AMPLIFIER (Radio Shack Cat. No. 277-105). It can be used to improve the quality of an inexpensive stereo system equipped with a ceramic cartridge by permitting the substitution of a magnetic cartridge phonograph. Equalization is provided for TAPE (NAB) at 3 3/4 IPS, PHONO (RIAA), TUNER or MICROPHONE. The Stereo Pre-amp features a wide power supply range—12 volts to -24 volts.

TYPICAL APPLICATION



This package contains a complete printed circuit board ready for parts to be added. To construct this project, you'll need the following parts:

PARTS LIST

SYMBOL	DESCRIPTION	QUANTITY	RADIO SHACK CAT. NO.
C1, C7	50µF/16V Electrolytic Capacitor	2	272-954
C2, C8	0.001µF Disc Capacitor	2	272-126
C3, C9	0.01µF Mylar Capacitor (PC)	2	272-1065
C4, C5, C10, C11	0.022µF Mylar Capacitor (PC)	4	272-1066
C6, C12	5µF/16V Electrolytic Capacitor	2	272-1001
C13	1000µF/35V Electrolytic Capacitor	1	272-1032
CR1	1A/50PIV Diode	1	276-1135
F1	¼A Slo-Blo Fuse	1	270-1288
IC	Dual Preamplifier	1	276-1729
R1, R5	33Ω ½W Resistor	2	271-018
R2, R4, R6, R8	2.2K ½W Resistor	4	271-009
R3, R7	3.3K ½W Resistor	2	271-028
S1	DPDT Switch (neutral center)	1	275-1545
S2	ON/OFF Switch (SPST)	1	275-324
T1	12V/300mA Transformer	1	273-1385
	*Cabinet (Chassis)	1	270-252
	Fuse Holder	1	270-364
	Quad Phono Jack	1	274-322
	2 Lug Tie Down Terminal Strip	1	274-685
	Power Cord	1	278-1255
	Single Conductor Shielded Microphone Cable	1	278-1277
	#22 Hookup Wire	278-1307	

*This is a suggested case to use for this Project.

If You Didn't Get This From My Site, Then It Was Stolen From...

www.SteamPoweredRadio.Com

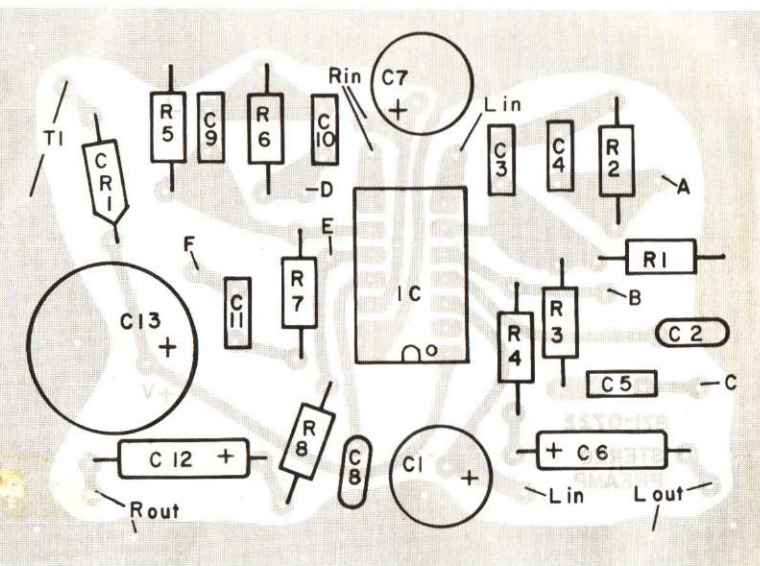
STEREO PREAMPLIFIER ASSEMBLY INSTRUCTIONS

WARNING: The transformer will have 120 volts across the primary; therefore, it is very important that you insulate the complete Project properly.

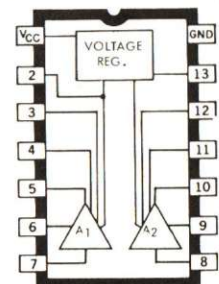
P. C. BOARD

NOTE: Solder all leads on copper side of P.C. Board and clip excess wire as you perform each step:

1. Mount 33Ω ½W resistors R1 and R5.
 2. Mount 2.2K ½W resistors R2, R4, R6 and R8.
 3. Mount 3.3K ½W resistors R3 and R7.
 4. Mount 1A/50PIV diode CR1. Be careful to mount it in the proper direction as shown on the P.C. Board.
 5. Install the integrated circuit (IC). Be sure to mount it correctly. The "notch" at one end should correspond to the "notch" as shown on the P.C. Board. DO NOT TOUCH THE PINS. Carefully solder the pins and tabs on the copper side of the P.C. Board. Clip excess wire.
 6. Mount 0.001µF capacitors C2 and C8.
 7. Mount 0.01µF capacitors C3 and C9.
 8. Mount 0.022µF capacitors C4, C5, C10 and C11.
- NOTE: When mounting the electrolytic capacitors, be sure to observe polarity as indicated on the capacitors and on the P.C. Board.
9. Mount 50µF/16V electrolytic capacitors C1 and C7.
 10. Mount 5µF/16V electrolytic capacitors C6 and C12.
 11. Mount 1000µF/35V electrolytic capacitor C13.



DUAL PREAMPLIFIER (ULN-2126A)

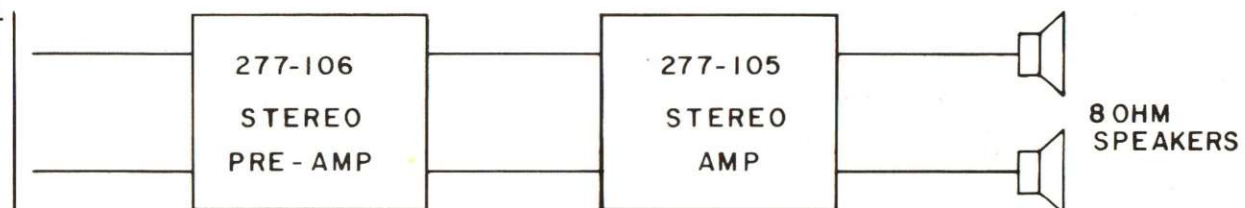


TYPICAL APPLICATION

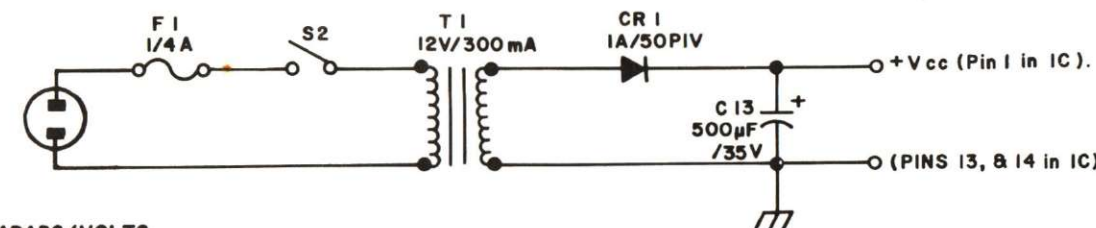
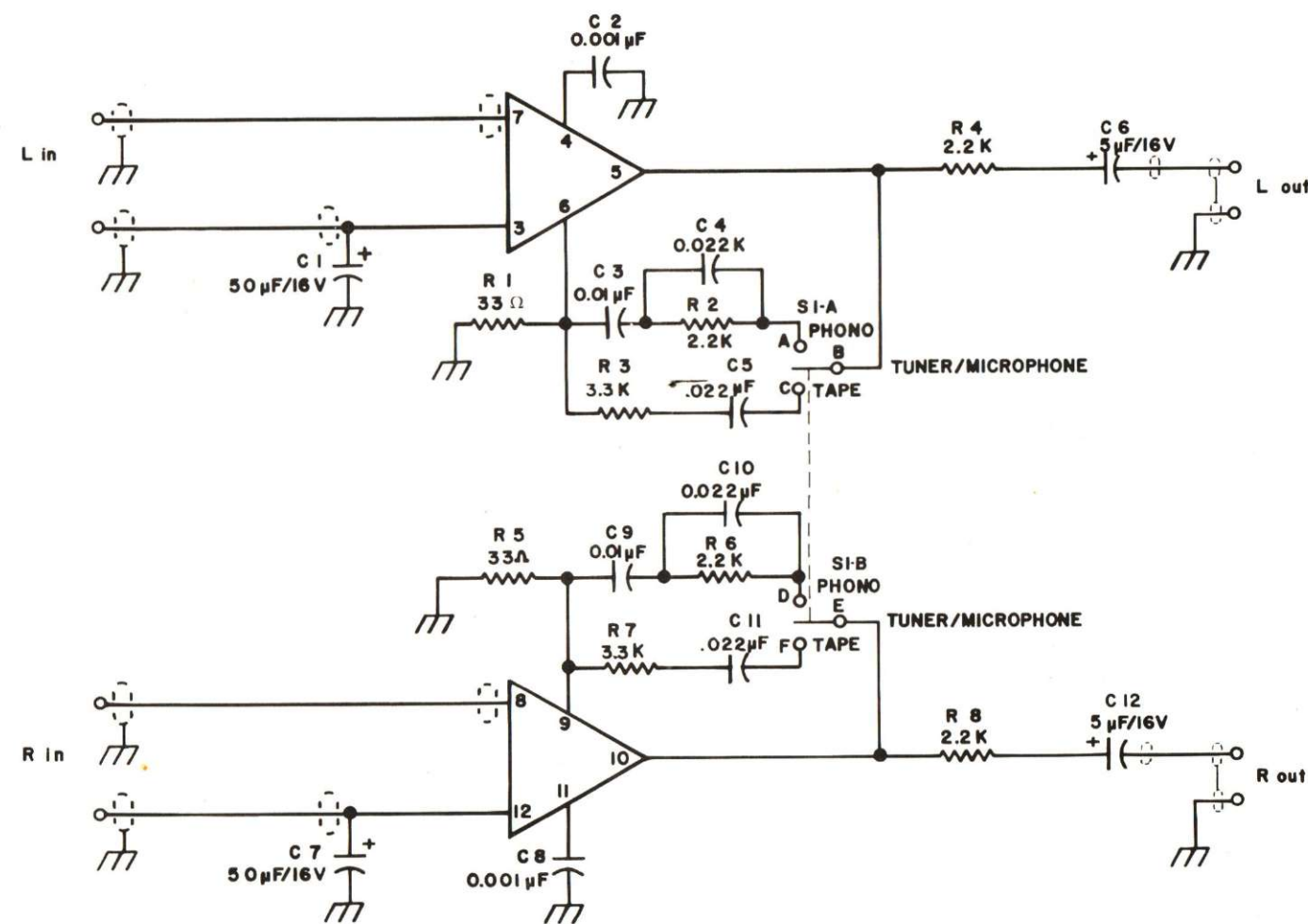


LOW LEVEL INPUT

- MAGNETIC PHONO CARTRIDGE
- MAGNETIC TAPE HEAD
- MICROPHONE
- TUNER



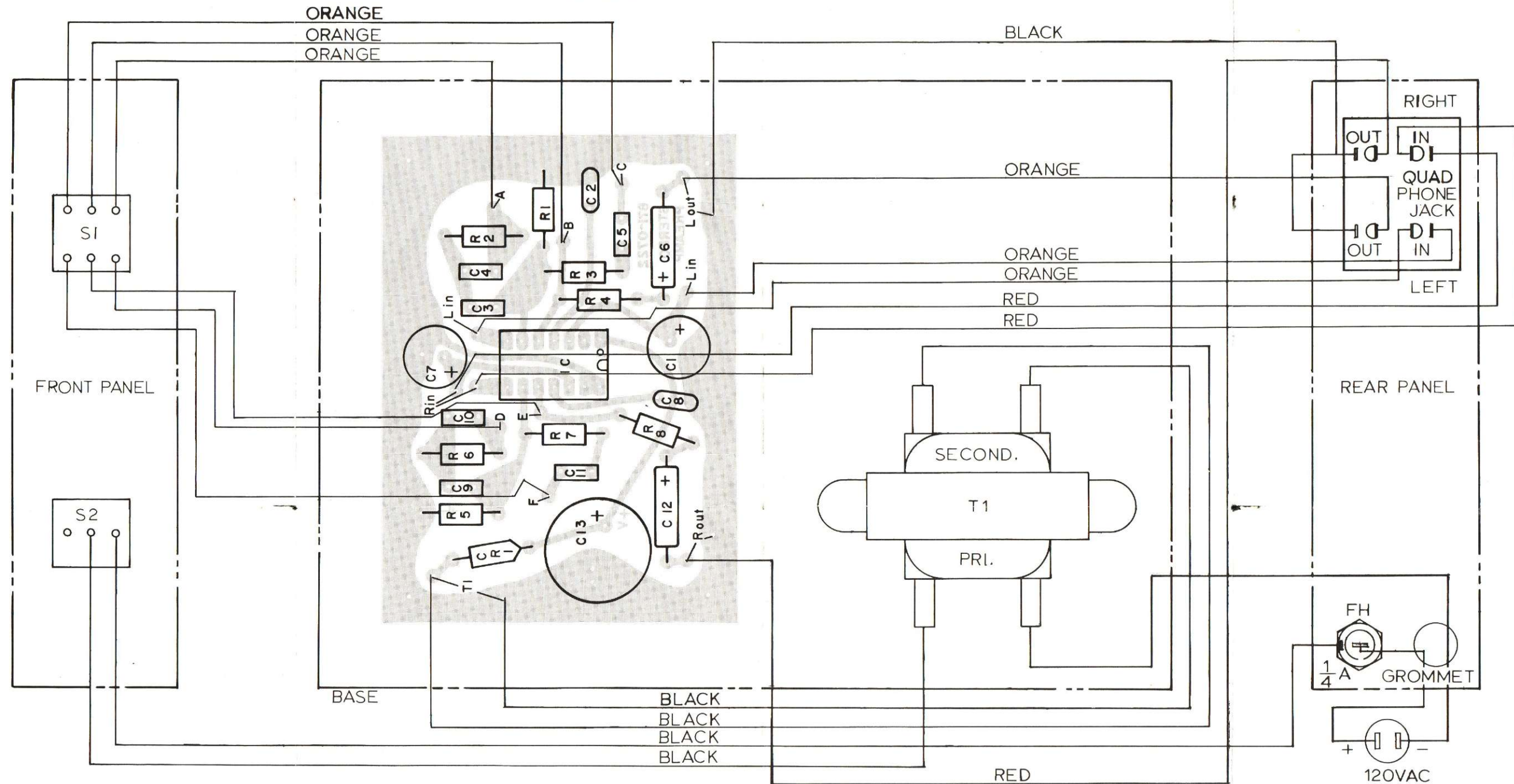
IT IS RECOMMENDED THAT YOU USE SHIELDED CABLE ON THE INPUT WIRING TO MINIMIZE NOISE AND HUM PICK-UP.



NOTES:

1. RESISTOR VALUES GIVEN IN OHMS.
2. CAPACITORS VALUES GIVEN IN MICROFARADS/VOLTS.
3. ALL RESISTORS 1/2 W.
4. ALL CAPACITORS P.C.-MOUNT TYPES.
5. IC = PA-239(2126A),(276-1729)
6. IC PIN 2 NOT USED.

THE INTERCONNECTION DIAGRAM IS BASED ON THE USE OF THE CHASSIS LISTED IN THE PARTS LIST.



INTERCONNECTION DIAGRAM I.C. STEREO PREAMPLIFIER

NOTES:

1. One end of all wire shield (Single Conductor Shielded Microphone Cable) must be connected to a common ground.
2. The length of hookup wire between components and the P.C. Board will depend on the style of cabinet (chassis) you select and the placement of the components thereon.
3. Wire colors are optional.
4. It is recommended that you use shielded cable on the input and the output wiring to minimize noise and hum pick up.
5. The transformer wires from the primary should be twisted together as well as those from the secondary.
* Grommet—Radio Shack Cat. No. 64-3025.

If You Didn't Get This From My Site,
Then It Was Stolen From...
www.SteamPoweredRadio.Com

RADIO SHACK  A TANDY CORPORATION COMPANY

U.S.A.: FORT WORTH, TEXAS 76107
CANADA: BARRIE, ONTARIO, CANADA L4M 4W5

990-0257

TANDY INTERNATIONAL ELECTRONICS

AUSTRALIA	BELGIUM	U.K.
280-316 Victoria Road Rydalmere, N.S.W. 2116	Parc Industriel De Naninne 5140 Naninne	Bilston Road Wednesbury, Staffs WF10 7JN

PRINTED IN U.S.A.