

FAIRCHILD  
DUAL LINE AMPLIFIER

MODEL 692LA-30

High Level

OK

1B692LA-30/2/71

**INSTRUCTION MANUAL**



FAIRCHILD SOUND EQUIPMENT CORPORATION, 10-40 45th Avenue, Long Island City, N.Y. 11101, 212 784-6163

If You Didn't Get This From My Site,  
Then It Was Stolen From...

[www.SteamPoweredRadio.Com](http://www.SteamPoweredRadio.Com)

FAIRCHILD MODEL 692/LA30 DUAL LINE AMPLIFIER

GENERAL

The MODEL 692LA/30 is a dual line amplifier designed to deliver one watt of power into a 150 ohm resistive load (+24db). With optional step up transformer, it will deliver a maximum of +30dbm. The set of low distortion line amplifiers utilize silicon transistors arranged in a complementary symmetry type output. The unit can be used in consoles as an output amplifier or in any application where a large headroom factor is desired.

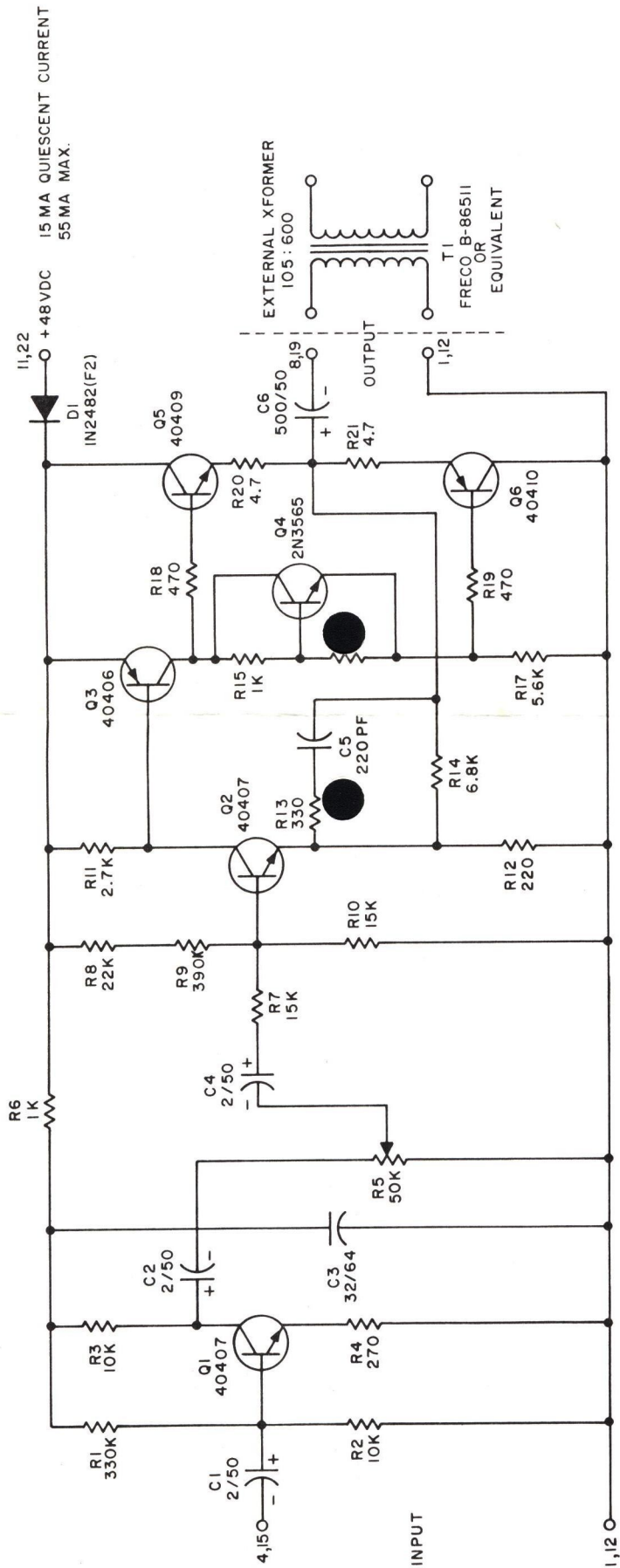
The MODEL 692LA/30 will mount in the FAIRCHILD 692RM card rack file (or any other type of suitable card file system). Single cards can be accommodated in the FAIRCHILD 692SCH single card holder, which in turn will mount in the FAIRCHILD 662RM rack mounting frame for 19" rack space.

CONNECTIONS

PIN	1	Audio & power ground (Amp. 1)
	4	Audio input (Amp. 1)
	8	Audio output (Amp. 1)
	11	+48VDC (Amp. 1)
	12	Audio & power ground (Amp. 2)
	15	Audio input (Amp. 2)
	19	Audio output (Amp. 2)
	22	+48VDC (Amp. 2)

SPECIFICATIONS

GAIN	Continuously variable from 0-51 db
FREQUENCY RESPONSE	30HZ - 15HZ $\pm$ 1/2 db 20HZ - 20KHZ $\pm$ 1db
DISTORTION	0.2% max.
SIGNAL-TO-NOISE	85db below max. output
INPUT IMPEDANCE	10K
OUTPUT IMPEDANCE	3 ohms
POWER REQUIREMENTS	48VDC @ 55ma max each amp. <i>1502 10011</i> @ 15ma quiescent each amp.
SIZE	3 1/2x5x1 thick



NOTE: 1- UNLESS OTHERWISE SPECIFIED  
 ALL RESISTORS ARE IN OHMS, 1/4 W  
 ALL CAPACITORS ARE IN MFD.

SCHEMATIC DIAGRAM  
 30DBM LINE AMPLIFIER  
 1/2 692 LA-30

B-97164  
 12/18/70

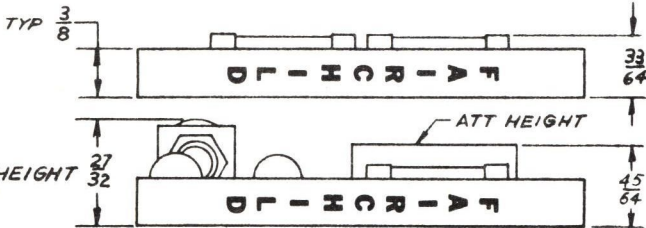
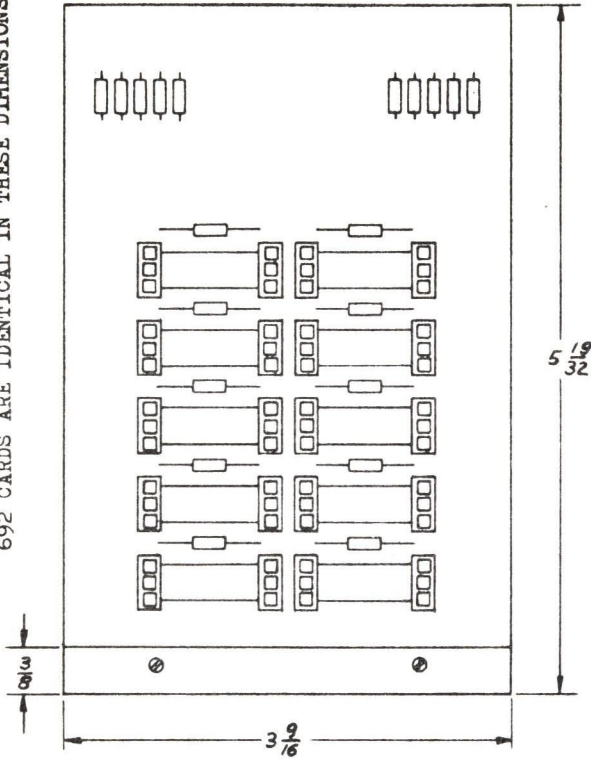
WARRANTY & SERVICE POLICY

See standard warranty attached to and forming part of this manual. To validate warranty, complete and return the warranty registration card provided. If there is any question on this or any other FAIRCHILD professional product, please do not hesitate to contact the factory: FAIRCHILD SOUND EQUIPMENT CORPORATION, 10-40 45th Avenue, Long Island City, New York 11101.

SCHEMATIC No.

# INTEGRA II PC BOARD MOUNTING DIMENSIONS

AUDIO SWITCHER CARD USED AS AN EXAMPLE FOR LENGTH & WIDTH. ALL 692 CARDS ARE IDENTICAL IN THESE DIMENSIONS.



A-96297

If You Didn't Get This From My Site,  
Then It Was Stolen From...

[www.SteamPoweredRadio.Com](http://www.SteamPoweredRadio.Com)