

INSTRUCTION MANUAL  
INTEGRA II SERIES  
MODEL 692AA & 692AA/TXI  
AMPLIFIER CARD



FAIRCHILD RECORDING EQUIPMENT CORPORATION  
10-40 45th Avenue, Long Island City, N.Y.  
11101

IB692AA/468

INTEGRA II SERIES  
FAIRCHILD MODEL 692AA & 692AA/TXI AMPLIFIER

DESCRIPTION

The MODEL 692AA (and the MODEL 692AA/TXI with input transformer) is a single amplifier, plug-in audio card, designed to provide amplification for microphone input, or for use as a booster or line amplifier. Fully silicon transistorized, the 692 provides 18 dbm of output power into a 150 or 600 ohm load. It features compact packaging, low distortion, excellent S/N ratio and low power consumption. Card is 3 9/16"H x 5 1/2"L.

CIRCUIT DESCRIPTION

The Model 692AA is a complementary symmetry Class AB circuit, providing output impedance of 3 ohms. The amplifier has direct coupling between stages, providing a minimum of 18 db of negative feedback. The amplifier is decoupled from the power supply by diode and resistor, D1 and R5, in conjunction with capacitor C2. Gain of the amplifier is controlled by means of variable feedback resistor, reducing distortion in minimum gain position. When the amplifier is supplied with input transformer, as in the Model 692AA/TXI, the transformer is mounted directly on the card. Recommended transformer for this application is Beyer TR145/BV35570. Mounting of the transformer on the card insures minimum noise pickup and minimum high frequency loss.

INSTALLATION

The 692AA amplifier card can be used in conjunction with the 692 remote control equipment in the 692RM rack mount, or it can be mounted separately using the 692SCH single card holder. For rack mounting, these card holders are accommodated in the 662RM rack mounting frame.

Connections are made as follows:

PIN Z	(22)	+24V DC at 6 ma	
X	(20)	} INPUT TERMINALS	(high in 692AA
W	(19)		(low in 692AA
S	(15)	OUTPUT - high	
P	(13)	-24V DC	AMP ground
			OUTPUT low

PRECAUTION: Precaution should be observed in locating the card in the system. When input transformer is mounted on the card, amplifier should be mounted as far as practical

from any strong magnetic field source. Regardless of the shielding of the input transformer, there is a possibility of hum pickup affecting the overall performance of the amplifier in the system.

### PERFORMANCE SPECIFICATIONS

GAIN ..... Without transformer from 22 to 51 db, continuously variable. With input transformer, 36 to 66 db.

FREQUENCY RESPONSE..... From 20 to 20K Hz  $\pm$  .5 db

DISTORTION (THD) ..... At +17.5 dbm out .35%

NOISE w/MAXIMUM GAIN..... Without transformer 125 db input noise with open input. With transformer, primary shorted, 136 db noise referred to input

POWER REQUIREMENTS..... 24V DC at 6 ma maximum

INPUT IMPEDANCE ..... Without transformer greater than 100K. With transformer 200 ohms.

OUTPUT IMPEDANCE..... 3 ohms (recommended load impedance 150 ohms up, inductive or non-inductive

POWER HANDLING CAPABILITY.... + 18 dbm

### WARRANTY & SERVICE POLICY

See standard warranty policy attached to and forming part of this manual. To validate warranty, complete and return the warranty registration card provided.

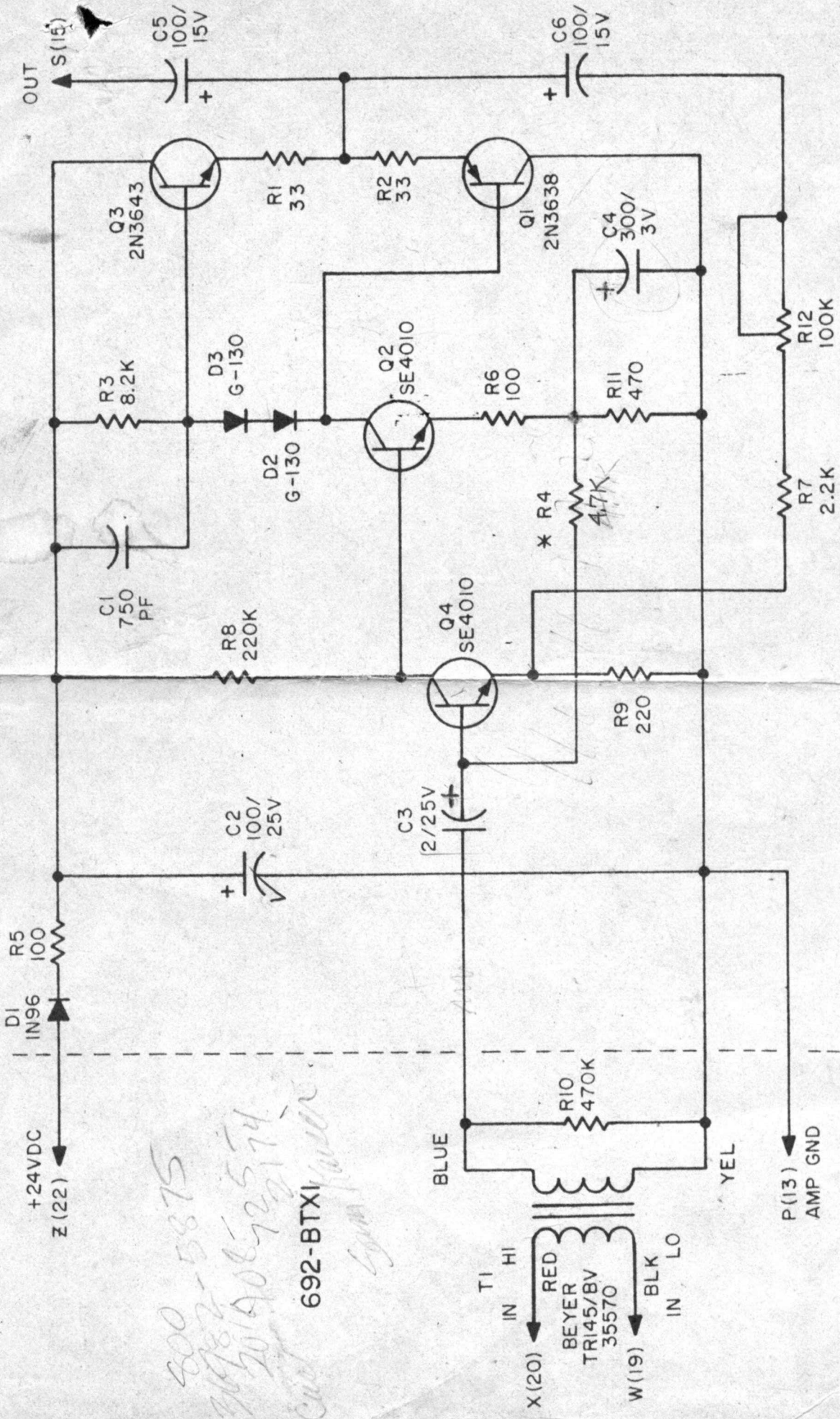
If there is any question on this, or any other FAIRCHILD professional audio product, please contact the factory: FAIRCHILD RECORDING EQUIPMENT CORPORATION, 10-40 45th Avenue, Long Island City, New York 11101.

When returning any FAIRCHILD professional product to the factory for service, include with the shipment a brief statement indicating reason for return, to avoid unnecessary delays.

### ATTACHMENTS

Schematic diagram 692AA - A96418  
Warranty & Registration Card

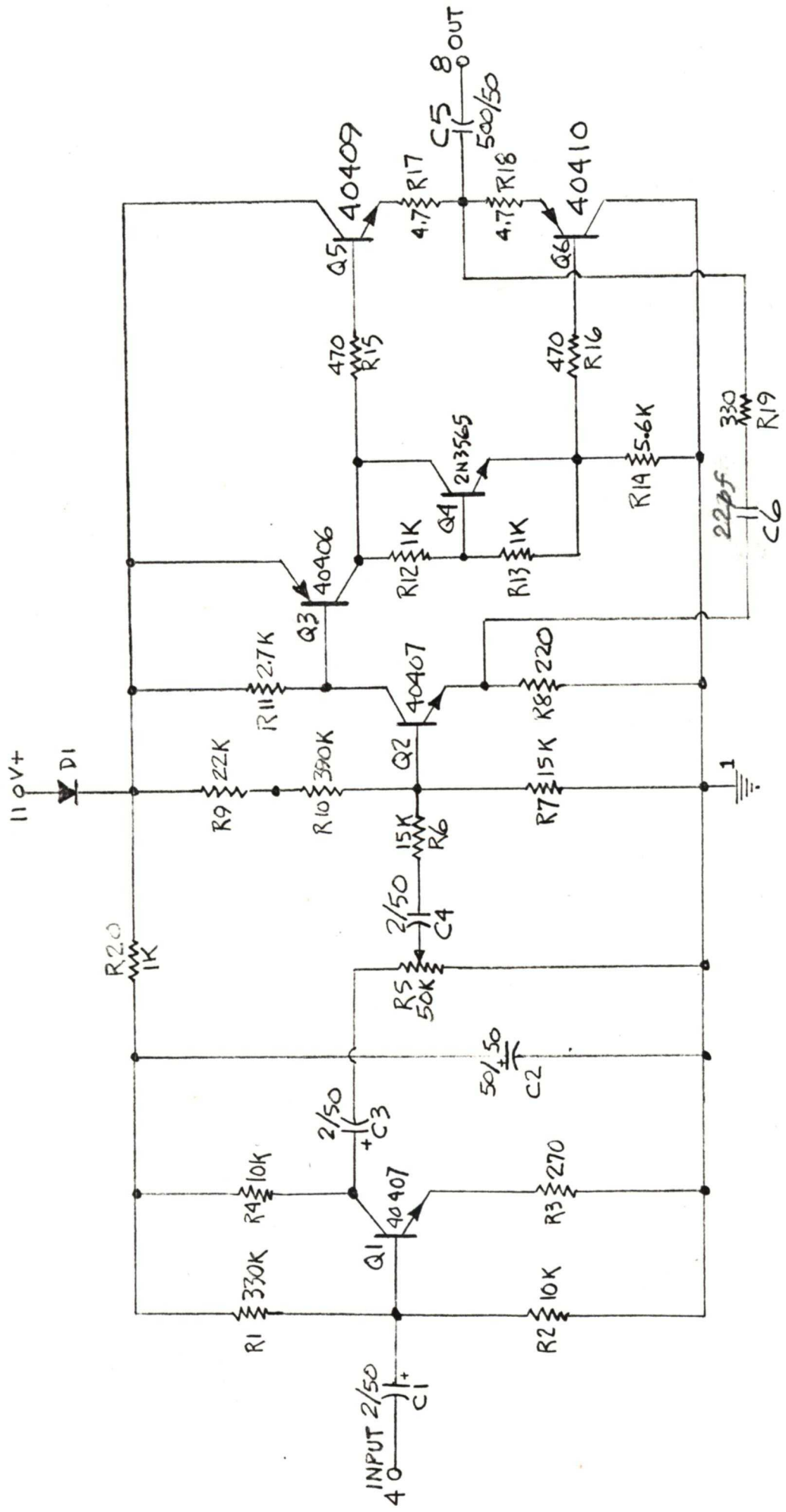




800  
 9082-5875  
 20/A0872574  
 Cud  
 692-BTXI  
 692-AA

A-96418  
 9/11/69 S.K.

692-AA SCHEMATIC DIAGRAM



FAIRCHILD  
692 LA-30  
LINE AMP

DA 7/50