

The NEW...

ALTEC LANSING

Model 9200A Console



NOW...

for the first time in the industry,
a user-assembled console
for the professional!



**HERE'S WHAT
YOU NEED TO KNOW!**

Altec Lansing presents the New Model 9200A Console

Altec's sensational new professional console—a basic, unitized enclosure for modular assembly from a complete line of components which may be selected from our catalog to meet the specific requirements of the professional.

- Highest professional quality for the professional user
- Completely modular
- Unlimited variations of component assembly
- Basic cabinet and hardware, drilled, punched and beautifully finished—all difficult metal work is done. Eliminates need for special cabinet designs and costly single lot fabrication.
- Solid state catalogued components to be chosen by the user
- Consoles may be assembled in multiples if needed
- Cabinet enclosure may be ordered with cushion, base and cowl as required
- Simplified customized by user for recording, re-recording, dubbing, broadcast studios, elaborate public address sound systems and any application for control console such as data processing, manufacturing controls, or military projects. You install what you need!
- Assembled from standard Altec professional components—makes financing easy if desired. Modification flexibility assures high resale value.
- A maximum of 27 strip modules per cabinet, each hinged for easy access. Available in 1¾ inch or 3½ inch width each. Can be mixed. Finished in satin black anodize.
- Accommodates up to 4 VU Meters for program plus 4 additional VU Meters mounted in a "stack" for echo send channels, plus graphic equalizer and jack panel on instrument panel.
- Unequaled versatility— one module may have a straight line pot, program equalizer, echo pot and a row of five channel selector keys. Another may use either straight line or rotary mixer; another for "talkback" including miniature dynamic microphone, slating keys and cue level control. You simply decide how you would like your dream console put together, and then quickly and easily assemble the modules in place.
- Human engineering carefully considered— completely functional for ease of operation.
- Basic cabinet has an overall length of 51 inches, 34 inches depth front to back by an average height of nine inches. Twenty-three 9470 Altec plug-in amplifiers may be accommodated inside the cabinet. Panel surface measures 18 inches from front to instrument panel.



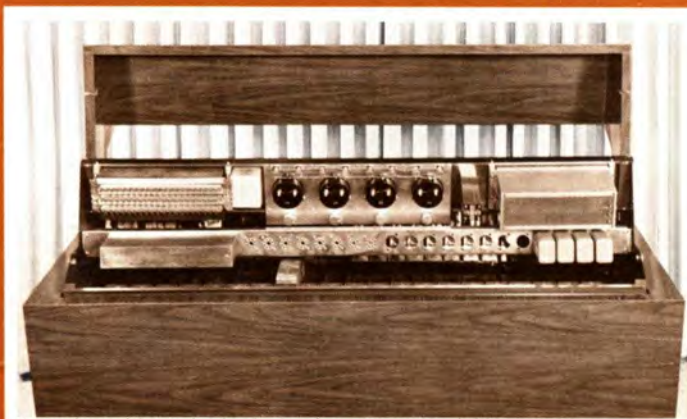
Side view of 9200A with 9201 Base and 9202 Cushion Assembly



Front view with all modules in hinged forward position



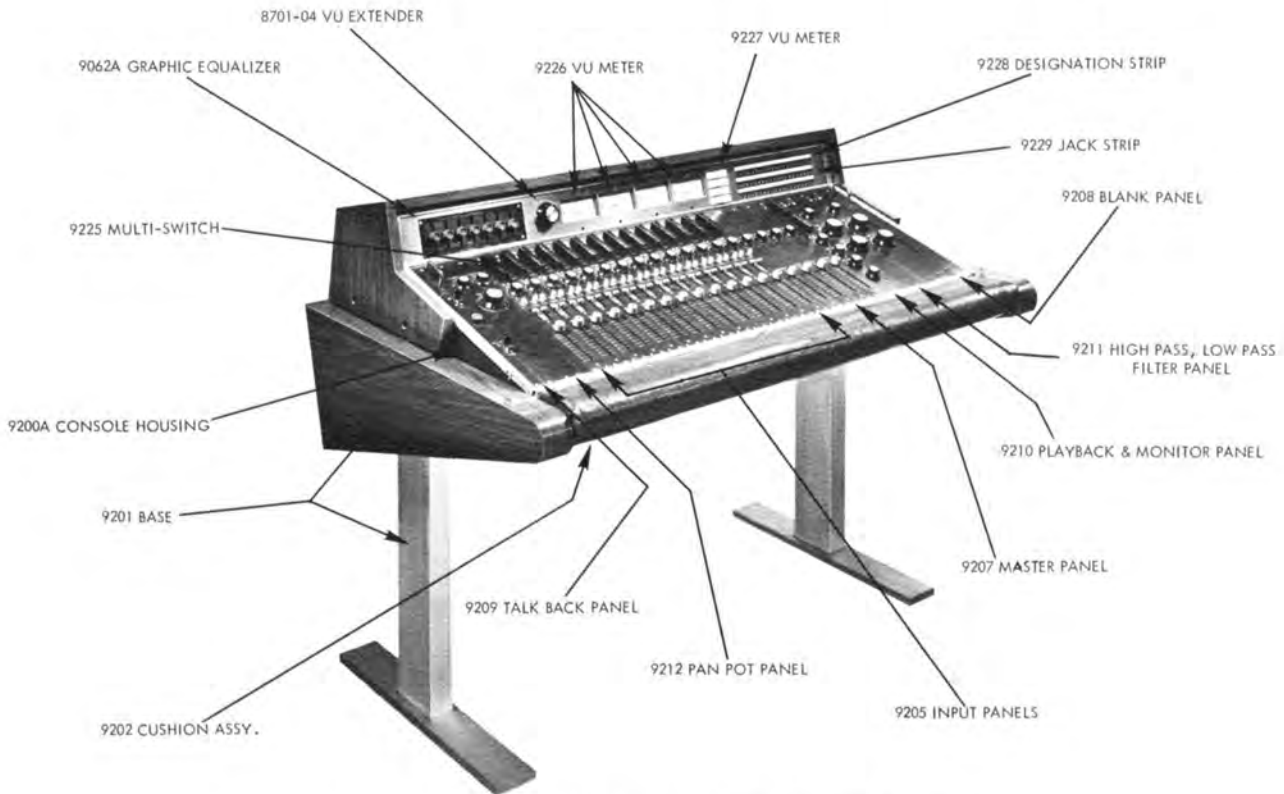
Front view of 9200A console



Rear view with cowl raised, showing easy accessibility to wiring

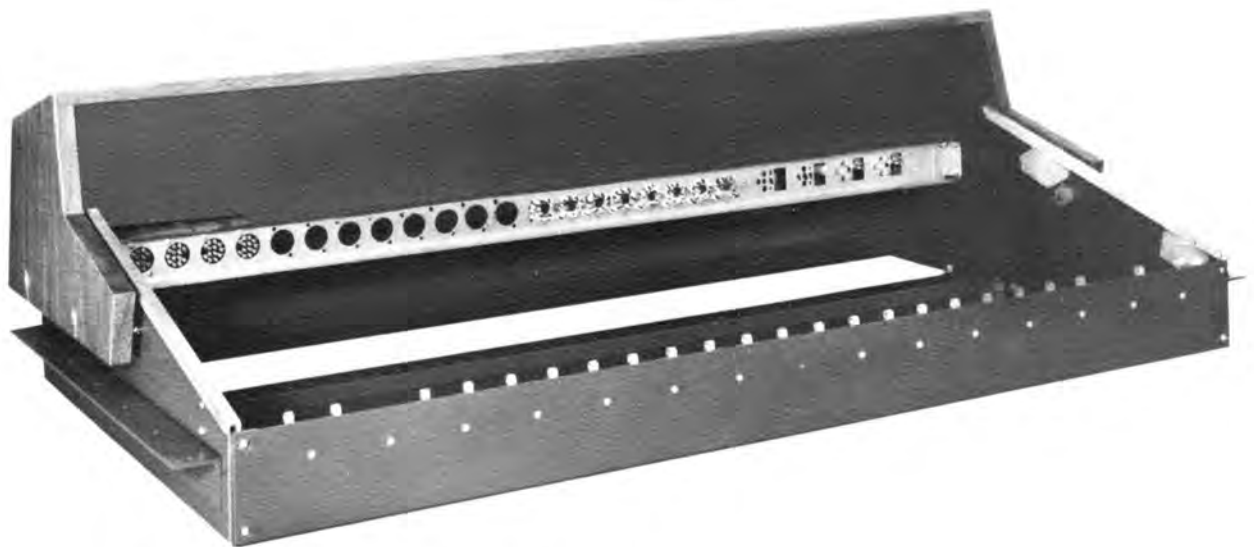
ALTEC

AUDIO CONTROL CUSTOM CONSOLE COMPONENTS



ALTEC 9200A TYPICAL RECORDING CONSOLE

The ALTEC 9200A "Studio Type" Control Console consists of several basic assemblies, the 9200A Console Housing, the 9201 Base, the 9202 Cushion Assembly together with a wide variety of individually assembled modular sections, all of which are ordered separately.



9200A CONSOLE HOUSING

www.SteamPoweredRadio.Com



ALTEC LANSING

A Division of *USPV* Ling Altec, Inc.

1515 South Manchester Ave., Anaheim, Calif.

The 9200A Console Housing is made of sheet metal so designed, that when the housing is mounted in a table or desk, four inches of the housing extends below the table or desk top level into the table or desk. The housing is approximately 48" long and 26" from front-to-back. It extends four inches down into the table or desk and 9-1/2" above the table or desk top.

The 9200A Housing does not include the instrument panel, which is the long panel mounted on brackets, located in the upper part of the housing. The main assembly of panels, which are accessories and are separate from the 9200A Console Housing, consists of 27 multiples of 1-3/4" strip type panels which can be assembled in any combination the customer requires. Just behind and below the instrument panel is a long panel, which is designed to mount the transformers, relays and associated equipment required for operation of the 9200A Control Console. Among other separate accessories are the amplifier trays, which are not furnished with the housing, and are mounted in the bottom of the housing at the rear. Either ALTEC 9470A Amplifiers with their tray, or ALTEC 9475A Amplifiers which require an added adapter, can be mounted in the back of the housing. The housing is large enough to accept 23 of the ALTEC 9470A or 25 of the ALTEC 9475A Amplifiers.

The cowl, which is part of the 9200A Housing, is mounted over the top of the instrument panel. It consists of a walnut-grained formica covered wood cowl hinged so that it can be opened from the rear, making the rear of the console accessible.

The housing is furnished with this portion of the console. Two small ground bars, the transformer mounting panel, the instrument panel, the meter mounting sub-panel and the necessary hardware to mount the jacks or graphic equalizers are mounted on the bottom of the housing or on the back of the instrument panel.

Located on the front edge of the housing, is a clamp strip that clamps all of the stationary hinge parts, which are also furnished, along with all of the other necessary hardware to attach the strips.

A row of barrier terminal blocks is located at the rear plate of the housing. There are eleven complete strips with 14 terminals each. The terminal strip that mounts on the bottom of the housing for connecting all of the strip panels, is an acces-

sory, and not furnished with the housing.

For customers who desire to mount the housing in their own tables or desks, two heavy mounting brackets, which attach to each end of the console, are furnished.

Strip panels are required to finish the housing. The housing is large enough to accept 27 of the 1-3/4" strip panels or 13 strip panels of the 3-1/2" size with one 1-3/4" size strip panel. However, the housing will accommodate any combination of strip panels the customer requires, as long as the combined number of strip panels do not exceed 27 panels, each 1-3/4" wide.

A panel stiffening rail is included with the ALTEC 9200A Console housing. After the strip panels are mounted in the housing, the stiffening rail is bolted to the underside of the panels tying the panels together, giving the effect of a solid panel. All of the screws, nuts, bolts and hardware used in assembling the housing are furnished.

When the console housing is completely assembled with strip panels, the main panel has an angle of 15° from horizontal, sloping upward toward the rear of the housing. The instrument panel is 15° from the vertical, sloping toward the rear of the console. The completed console housing has a main panel measuring 47-1/4" wide and is 18" deep. The instrument panel is 48" wide and 4" high.

The 9201 Base is an accessory part for the customer who wishes to use the custom base. It consists of two legs and feet and a bracing panel between the two legs. A formica covered wood cabinet forms the support for the housing.

When the console housing is mounted on the 9201 Base, the legs of the base, being hollow, are used as conduit for all wiring going into and coming out of the console housing.

Illustrated, is the 9202 Cushion Assembly. It is an accessory that mounts on the front edge of the housing, when it is used on the 9201 Base. It may be used on the customer's own table or desk if desired. The cushion is made of rebonded foam rubber wrapped in naugehyde.

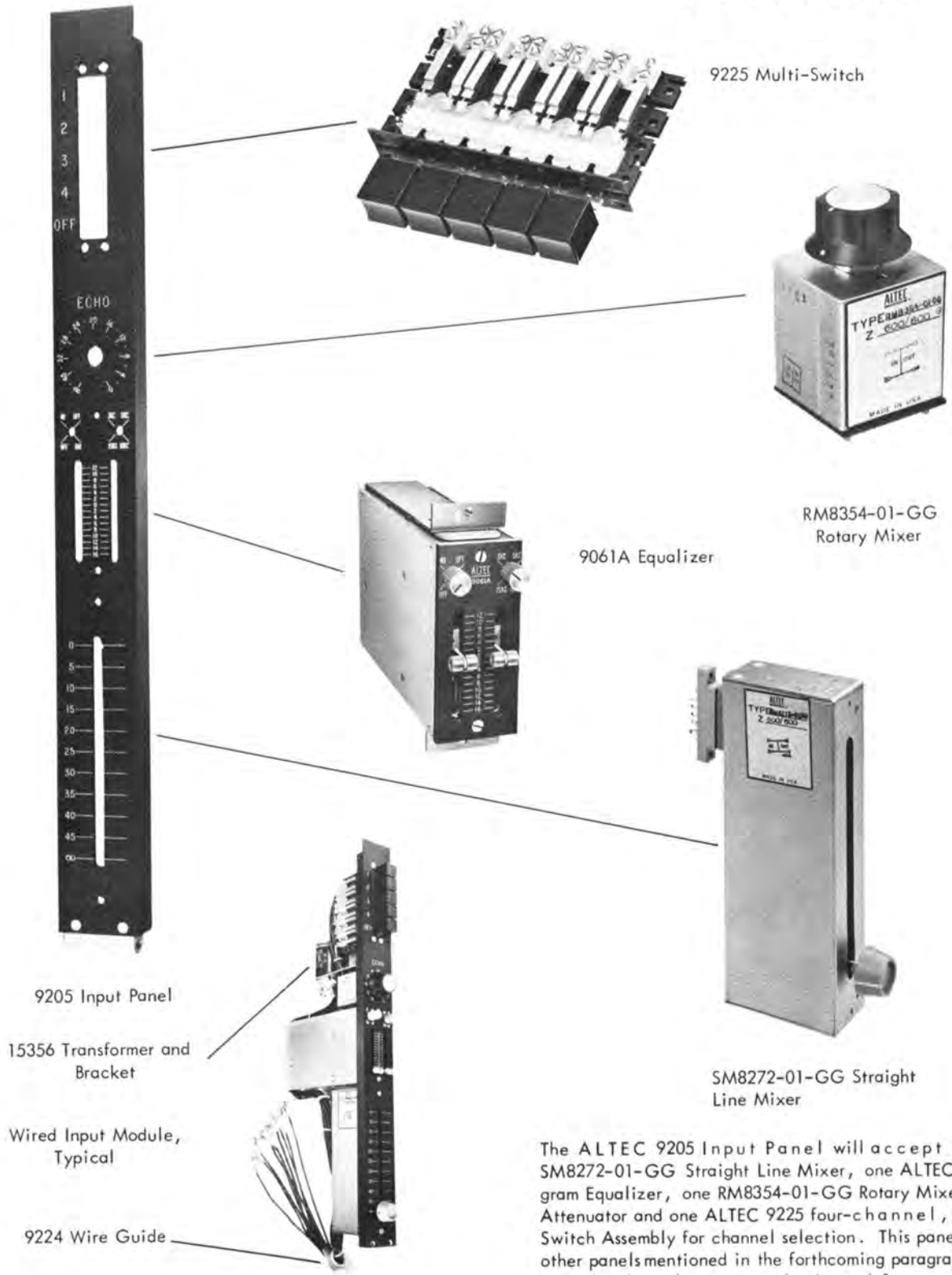


9202 Cushion Assembly



9201 Base

9205 INPUT PANEL



9225 Multi-Switch



RM8354-01-GG
Rotary Mixer



9061A Equalizer



SM8272-01-GG Straight
Line Mixer

9205 Input Panel

15356 Transformer and
Bracket

Wired Input Module,
Typical

9224 Wire Guide

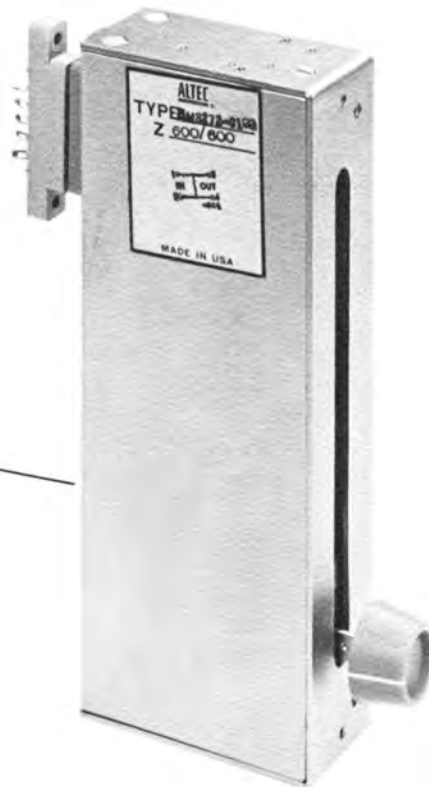
The ALTEC 9205 Input Panel will accept one ALTEC SM8272-01-GG Straight Line Mixer, one ALTEC 9061A Program Equalizer, one RM8354-01-GG Rotary Mixer Echo Send Attenuator and one ALTEC 9225 four-channel, push-button Switch Assembly for channel selection. This panel, as are all other panels mentioned in the forthcoming paragraphs, are engraved and may be customer designed for any configuration desired by the customer.



9207 Master Panel



RM8354-01-GG Attenuator



SM8272-01-GG Straight Line Mixer



9224 Wire Guide

Master Panel

The ALTEC 9207 Master Panel will accept an ALTEC SM8272-01-GG Straight Line Mixer and one ALTEC RM8354-01-GG Echo Return Attenuator. This panel may be custom designed for any configuration desired by the customer.

ALTEC

AUDIO CONTROL CUSTOM CONSOLE COMPONENTS

9209 TALKBACK PANEL



9209 Talk Back Panel



9237 Cue Key



677B Microphone



9235 Talk Back/Slate Key



Talk Back Module

9224
Wire
Guide

The ALTEC 9209 Talk Back Panel will accept an ALTEC 9235 Talk Back/Slate Key, an ALTEC 677B Miniature Microphone and an ALTEC 9237 Cue Key. The talk back/slate key and cue key operate vertically on the panel. This panel should be located near one end, as the handle will aid in lifting all panels after they are bolted to the stiffening rail. This panel, as with other panels making up a completed control console panel, may be custom designed for any configuration desired.

9210 PLAYBACK AND MONITOR PANEL



9231 Multi-Switch



RM8354-04-GG Rotary Mixer



254-03-41 Switch



9224 Wire Guide

Typical Playback and Monitor Module

9210 Playback and Monitor Panel

The ALTEC 9210 Playback and Monitor Panel will accommodate one ALTEC 9231 push-button Switch Assembly for channel selection. It will accept one ALTEC RM8354-04-GG Rotary Mixer Playback Gain Control and one ALTEC RM8354-04-GG Rotary Mixer Monitor Gain Control. There is also space for one ALTEC 254-03-41 Playback Rotary Switch and one ALTEC 254-03-41 Monitor Switch. However, the panel may be designed for any configuration the customer desires.

9211 HIGH-LOW PASS FILTER PANEL



9211 High Pass - Low Pass Filter Panel

Typical High Pass - Low Pass Filter Module



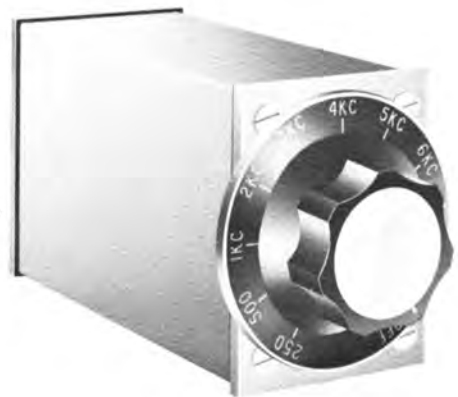
9238 Jack



851-04-41 Rotary Switch



9069B High Pass Filter



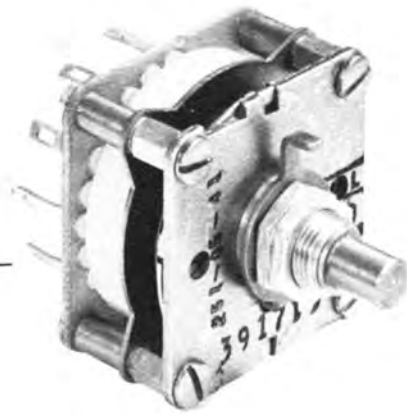
9068B Low Pass Filter

The ALTEC 9211 High Pass - Low Pass Filter Panel will accept one ALTEC 9068B Variable Low Pass Filter and one 9069B Variable High Pass Filter. The panel also has accommodations for an ALTEC 851-04-41 four position Rotary Precision Switch. There are also accommodations for two ALTEC 9238 Jacks on each filter panel. The above filter panel, complete and wired as shown, may be purchased under the ALTEC Part Number 9070A Filter Module.

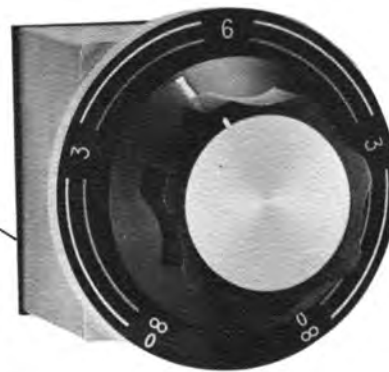
ALTEC 9212 PAN POT PANEL



9212 Pan Pot Panel



251-05-41 Rotary Switch



PP8808-02-GG Stereo Pan Pot



Typical Pan Pot Module

9224 Wire Guide

The ALTEC 9212 Pan Pot Panel will accept one ALTEC PP8808-02-GG Stereo Pan Potentiometer. The panel also has provisions for two ALTEC 251-05-41 five position, four-channel Rotary Precision Switches. Any configuration of this panel may be custom designed for the customer.

9239 INSTRUMENT PANEL

9227 VU Meter



9226 VU Meter



8701-04 VU Extender



9062A Graphic Equalizer



9229 Jack Strip

The ALTEC 9239 Instrument Panel has two large, rectangular cut-outs on each end that will mount either graphic equalizers, switches, jacks or any other device the customer requires. The panel has four cut-outs that will accommodate four ALTEC 9226 VU Meters and one cut-out that will accommodate up to four vertically stacked 9227 Echo VU Meters. This particular panel also has accommodations for an ALTEC 8701-04 VU

Extender and the cut-out on the end will mount three ALTEC 9229 Jack Strips. In the event the customer requirements will not permit the use of the 9239 Instrument Panel, ALTEC has developed the 9243 and 9252-X Special Instrument Panels which may be designed to any configuration desired by the customer. For further information on these special instrument panels, refer to page 10 of this brochure.

PANELS

The ALTEC 9203, 9204 and 9208 Blank Panels are used to cover otherwise gaping holes in the 9200A Control Console Panel. The 9203 Blank Panel is 1-3/4" wide and the 9204 Blank Panel is 3-1/2" wide. The 9208 Blank Panel is also 1-3/4" wide and has a handle at the end. The 9208 Blank Panels are located at either end of the console panel so that the console panel can be easily lifted for access to the components inside. All three panels are accessory items ordered separately, as required by the customer.

The ALTEC 9206 Input Panel is an appropriately engraved accessory item that can be ordered separately as required by the customer. It is 1-3/4" wide and has appropriate cut-outs for an ALTEC 8272 Straight Line Mixer and an ALTEC 9225 five station Multi-Switch.

The ALTEC 9213 Input Panel/Echo is an accessory item ordered separately, as desired by the customer. It is 1-3/4" wide and has the appropriate cut-outs and engraving for the installation of an ALTEC 8272 Straight Line Mixer, an ALTEC 8354-01 through 8354-04 Rotary Mixer and an ALTEC 9225 Multi-Switch.

The ALTEC 9214 Input Panel for 2 switches is an accessory item ordered separately, as desired by the customer. The panel is 1-3/4" wide and has the appropriate cut-outs and engraving for an ALTEC 8272 Straight Line Mixer, an ALTEC 8354-01-GG Rotary Mixer and two ALTEC 9225 Multi-Switches.

The ALTEC 9215 Single Pot Panel is an accessory item ordered separately, as desired by the customer. The panel is 1-3/4" wide and has one cut-out with the appropriate engraving for an ALTEC 8272 Straight Line Mixer.

The ALTEC 9216 Input Panel is an accessory item ordered separately, as desired by the customer. The panel is 1-3/4" wide and has cut-outs and engraving for an ALTEC 8272 Straight Line Mixer, two ALTEC 9060A Equalizers, one 8354-01-GG Rotary Mixer and one ALTEC 9225 Multi-Switch.

The ALTEC 9243 Special Instrument Panel is a grey anodized instrument panel, without cut-outs, intended for the customer who desires to design his own cut-outs and do his own engraving.

The ALTEC 9250-X and 9251-X Special Strip Panels will be used by the customer who desires to have special cut-outs and engraving designed by him and manufactured at the factory. The (-X) will be replaced by a dash number which will be assigned to the part when it is made. Each customer will receive a different part number. The 9250-X Special Panel is 1-3/4" wide and the 9251-X is 3-1/2" wide.

The ALTEC 9252-X Special Instrument Panel will be used by customers whose requirements will not permit the use of the 9239 Instrument Panel. The 9252-X Instrument Panel will be cut-out and engraved at the factory to any configuration desired by the customer. The (-X) will be replaced by a dash number which will be assigned to the part when it is made.

MIXERS



RM8354-01-GG

ALTEC Rotary Mixers are available in two different frame sizes as well as in single, double, triple and quadruple gang units for multi-channel applications. For further information refer to the ALTEC Attenuator and Network Catalog, AL-1496-2.



SM8272-01-GG

ALTEC Straight Line Mixers, precision controls for signal blending, are designed for the most critical applications in musical scoring, re-recording, radio and television usage, and high quality sound reinforcement systems. Refer to the ALTEC Attenuator and Network Catalog, AL-1496-2, for further information.



PP8808-02-GG

ALTEC Stereo Pan Potentiometers have a 12dB insertion loss and are designed for 600 ohm input and output impedances. For further information, refer to the ALTEC Attenuator and Network Catalog, AL-1496-2.



MN8000-02-GG

The ALTEC series of Fixed Mixer Networks will handle any number of mixer branches up to 27 (more on special order) and, because they are reversible, may be used as dividing networks. For more information on this ALTEC product, refer to the ALTEC Attenuator and Network Catalog, AL-1496-2.

ATTENUATORS



VU-8701-01-VUD

Each ALTEC Variable Rotary VU Meter Range Extender consists of a 3900 Ohm, bridged-T attenuator with 3600 Ohm building-out resistors at the input. All models are supplied with a knob and dial. Refer to ALTEC Attenuator and Network Catalog, AL-1496-2 for further information.

AMPLIFIERS



The ALTEC 9470A Amplifier will produce either +18 or +27 dBm, depending on external strapping. Utilizing transformers on both input and output with multiple ranges, complete isolation is afforded for ease of matching the 9470A to associated equipment. Twenty-three 9470A Amplifiers may be mounted in the 9200A Cabinet. For complete specifications refer to the ALTEC Catalog Sheet AL-1481-1.



9471A

ALTEC's Model 9471A, 20 Watt output Monitor Amplifier, and Model 9476A, 8 Watt output Monitor/Cue Amplifier, embodies the latest "state-of-the-art" design in solid-state circuitry. All transistors and diodes are silicon, assuring these amplifiers a long life of continuous operating performance. Their design parameters permit uninterrupted operation without derating, at temperatures up to 55° C (131°F). These amplifiers are mounted outboard on the 9233 Base Mounting Bracket Assembly. Complete specifications are given on ALTEC Catalog Sheet, AL-1725.



9476A



The ALTEC 9475A Amplifier is a highly reliable, all semi-conductor amplifier designed to function as a preamplifier, booster amplifier, line amplifier or program amplifier. Twenty-five of these amplifiers may be mounted in the 9200A Housing. For further information, refer to the ALTEC Catalog Sheet, AL-1485-1.

EQUALIZERS



The ALTEC 9060A Microphone Equalizer, normally mounted in the 9216 Input Panel, is designed to correct the variations in response which occur when using different types of microphones for recording a single master. For further information, refer to the ALTEC Catalog Sheet, AL-1488-3.



The ALTEC 9061A Program Equalizer, normally mounted in the 9205 Input Panel, provides continuously variable equalization at six important frequencies; at 40 or 100 Hz in the low frequency range and at 3, 10 or 15 KHz in the high frequency area. For specifications and further information, refer to the ALTEC Catalog Sheet, AL-1486-3.



The ALTEC 9062A Graphic Equalizer, normally mounted in the 9239 Instrument Panel, provides the engineer with quiet, positive, variable boost or attenuation, in steps of 1 dB, at seven critical frequencies. For specifications and further information, refer to the ALTEC Catalog Sheet, AL-1489-2.

SWITCHES



The ALTEC 9225 Multi-Switch, normally mounted on the 9205 Input Panel, is a five station, formed spring switch with five square black buttons. The stations are all interlocking and are non-illuminated. There is one station for each channel and an OFF position. This switch may be had with up to 18 stations. In order to find the length of a switch of this type, multiply the number of stations or buttons by 5/8" and add 5/8".



The ALTEC 9231 Dual, 8 Position Key Switch, normally mounted on the 9210 Playback and Monitor Panel, is comprised of eight stations. It is a formed spring switch with crossbar contacts on each station. The switch is of the push-to-lock and push-to-unlock type.



251-05-41



254-03-41



851-04-41

ALTEC Rotary Precision Switches are available in 1-1/2" (3.81 cm.) sizes with up to 36 contacts for continuous rotation, 33 with stops, up to two poles per deck, and in a 2-1/2" (6.35 cm.) version with 48 positions continuous rotation, 45 with stops, and up to four poles per deck. Up to 20 decks can be provided in a single switch.

FILTERS



9068B



9069B

The ALTEC 9068B Low Pass Filter and 9069B High Pass Filter, normally located on the 9211 High Pass - Low Pass Filter Panel, are ideal for all broadcasting, recording and reproduction of sound. As "sound effects" or "special effects" components, they are unsurpassed. The wide variety of effects possible — coupled with the simplicity and ease of operation — make these filters a necessity for professional audio applications where accurate control of the audio spectrum is required. For technical information, refer to the ALTEC Catalog Sheet, AL-1487-2.

TRANSFORMERS



ALTEC's 15036 Impedance Matching Transformer is a repeating coil type, so precisely balanced that it may be used, when desired, as a hybrid transformer. Twelve of these transformers will be accommodated within the 9200A Housing. For further information, refer to the ALTEC Custom Transformer and Power Supplies Catalog, AL-1517.



15335



15356

The ALTEC 15335 and 15356 Bridging and Matching Transformers are miniature line-to-line isolation transformers. Eight of these transformers may be mounted on the transformer mounting strip as well as eight each of the 1578A, 1579A and 1588A preamplifiers. For further information, refer to the ALTEC Catalog Sheet, AL-1440-8.



The K-241-D Input Transformer is a 20-20 plus transformer of comparatively small size in relation to its performance characteristics. Its primary balance places it in a class with repeating coils. Twelve of these transformers will be accommodated within the 9200A Housing. Refer to the ALTEC Custom Transformers and Power Supplies Catalog, AL-1517 for further information.

POWER SUPPLIES



The ALTEC 9550A Power Supply, used with the 9475A Amplifier, is an all solid-state unit using silicon diodes in a full wave bridge rectifier. It delivers 24V dc at 2 Amperes. The design of the power supply includes an external sensing circuit to insure that the output voltage will remain constant regardless of line voltage fluctuations. The 9550A Power Supply is mounted external of the housing on the 9233 Base Mounting Bracket Assembly. Complete specifications are listed in the ALTEC Catalog Sheet, AL-1481-1.

VU METERS



9226



9227

Both the ALTEC 9226 VU Meter and the 9227 Echo VU Meter are designed to conform to ASA Standard C16.5 - 1954. Both meters have a high sensitivity due to a combination of a special copper oxide rectifier and an extremely sensitive movement with a special magnetic system. The 9227 Meter, because of its design, can be stacked vertically, thus conserving space.

MISCELLANEOUS EQUIPMENT



The ALTEC 9223 Transformer Bracket is a bracket designed to hold the eight-pin ALTEC 15335 and 15356 Bridging and Matching Transformers. It is secured to the strip panel by a single screw.



The ALTEC 9224 Wire Guide is a bracket designed to support and route the wires from the equipment mounted on the strip panels. The wire guide is attached to the strip panel by two screws which also attach the hinge to the strip panel.



By removing the celluloid protector of the ALTEC 9228 Designation Strip, proper designations may be typed or printed on strips of paper. The designation strip is used with the ALTEC 9230 Jack Fastener.



The ALTEC 9229 Jack Strip has 20 jacks per strip. The design of the jack strip makes it possible to easily remove a single sleeve for replacement without disturbing the remaining jacks or the wiring of the strip.



Two ALTEC 9230 Jack Fasteners are used for mounting the jack and lamp socket strips and jack blanks on the switchboard stiles. Two jack fasteners are required for each strip.



The ALTEC 9232 Terminal Strip Assembly mounts on the bottom of the 9200A Console Housing. The terminal strip is used to terminate wiring from the strip panels and four are required for a fully complemented console housing.



The ALTEC 9233 Base Mounting Bracket Assembly is an assembly suspended between the legs of the 9201 Base. It can be used to mount auxiliary equipment, such as the 9550A Power Supply with its 9852A Mounting Tray, the 9471A Amplifier with its 9581A Mounting Tray and the 9476A Amplifier with its 9856A Mounting Tray.



The ALTEC 9234 Patch Cord is of the tip, ring and sleeve single plug type. The conductors are shielded with special, highly flexible tinsel and covered with long wearing mercerized cotton braid.



9237

The ALTEC 9235 Talk-back/Slate Key and 9237 Cue Key are rugged, reliable, well constructed assemblies. The frames are formed of heavy, press welded steel stampings. Long springs without forms at the point of flexing, terminating in tinned lug terminals, insure dependable spring life.



9235



The ALTEC 9236 Relay is associated with and in the same circuit as the Talk-back/Slide Key. The 9200A Housing can accommodate 8 relays.



The ALTEC 9238 Jack, normally located on the 9211 High Pass - Low Pass Filter Panel, has a rugged, nickel plated steel frame, press welded to provide dimensional stability. Springs are fabricated of long wearing, rust free nickel alloy.

The ALTEC 9240 Jack Cut-out Apparatus Blank is a blank piece of metal the same size as the jack cut-out in the instrument panel. It is used to cover the cut-out in the event 9229 Jack Strips are not required. The blank is inserted from the rear of the instrument panel and held in place by spring tension. The apparatus blank can be used to mount auxiliary equipment.

The ALTEC 9241 Main Meter Apparatus Blank is a blank piece of metal the same size as the cut-out for the 9226 VU Meter. It is used to cover the cut-out if no meter is installed in the 9239 Instrument Panel. It is inserted from the rear of the instrument panel and held in position by spring tension.

The ALTEC 9242 Echo VU Meter Apparatus Blank is a blank piece of metal the same size as the cut-out for the 9227 VU Meters. It is used to cover the cut-out if no meters are installed. It is also inserted from the rear of the 9239 Instrument Panel, but is held in place by the screws that hold the meters in place.

The ALTEC 9245 Adapter is designed to be attached by screws to the bottom of the 13401 Mounting Tray. This permits the 9475A Amplifier to be used in place of the 9470A Amplifier if desired.



The ALTEC 9246 Component Chassis has accommodations for four 15095 or 15335 transformers or four 1578A, 1579A or 1588A preamplifiers. The component chassis is slid into the 9850A Mounting Tray and attaches to the connectors in the rear.



The ALTEC 9850A Mounting Tray is an accessory for the ALTEC 9470A Amplifier. The tray is two inches wide, two and three-quarter inches high and twelve inches long. The tray is finished in ALTEC green and weighs 11 ounces.



The ALTEC 13401 Mounting Tray is an accessory for the ALTEC 9475A Amplifier. It is 1-3/4" wide and 8-7/8" long.

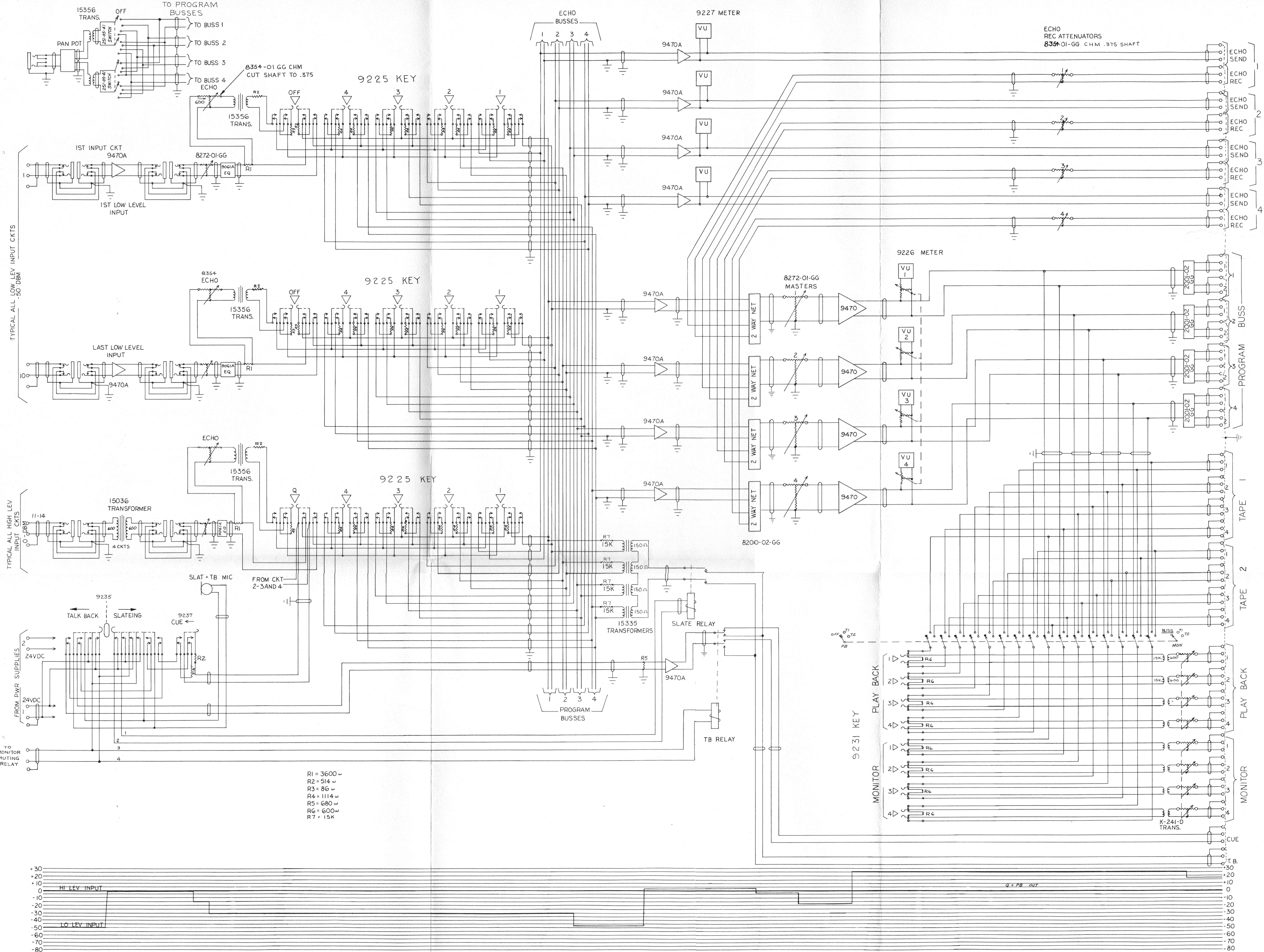


The ALTEC 9852A Mounting Tray is an accessory for the ALTEC 9550A Power Supply. The 9852A Mounting Tray is supplied with receptacles for mating with the plugs on the rear of the power supply.

The 9581A Mounting Tray is an accessory for the 9471A Amplifier and the 9856A Mounting Tray is an accessory for the 9476A Amplifier.



The ALTEC 677B Microphone is 7/8" in diameter at the top, tapering to 3/4" at the cable entrance. The 677B is a miniature microphone for intercom and talk-back functions. For complete specifications, see ALTEC Catalog Sheet, AL-1708-1.

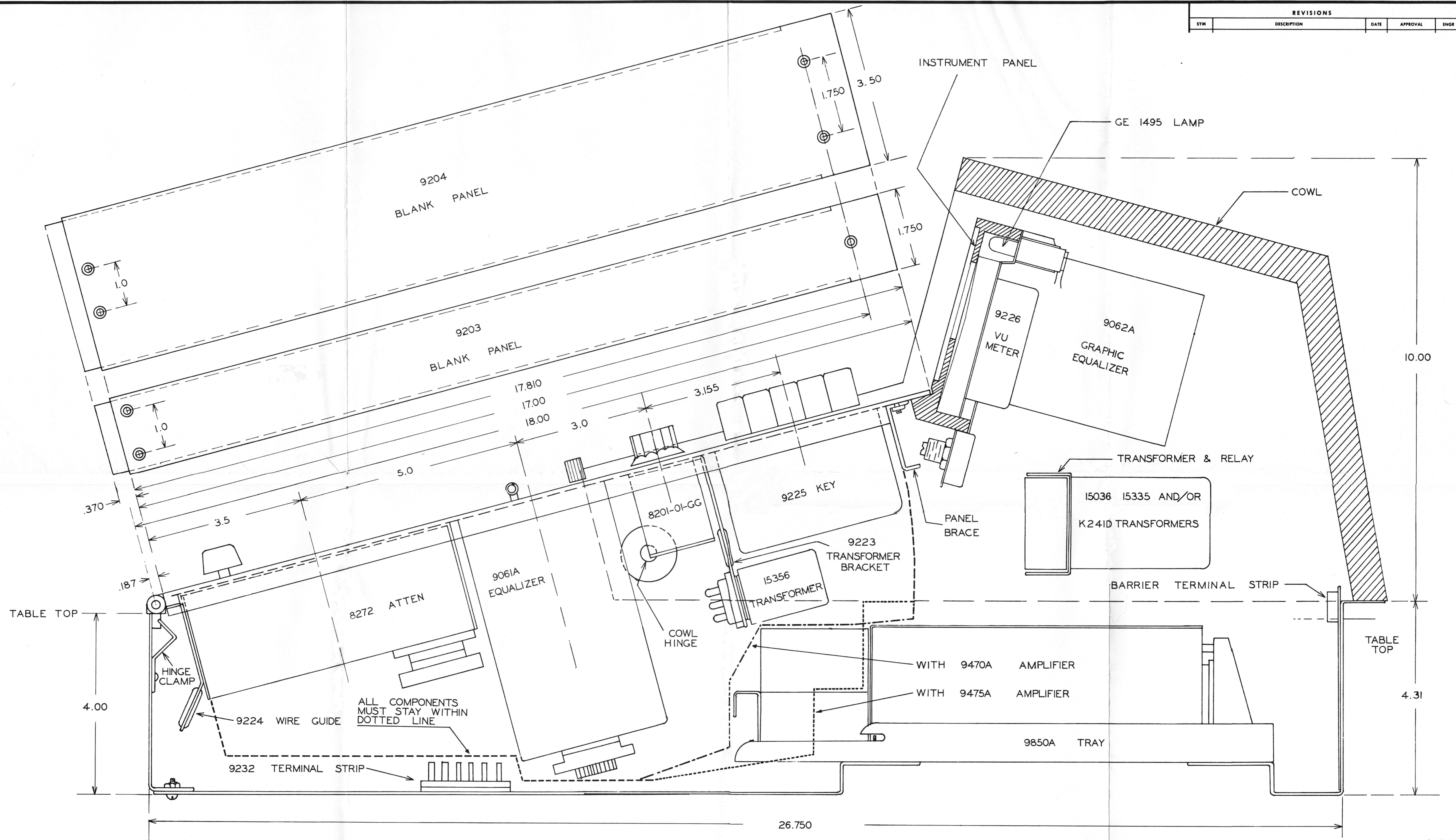


- R1 = 3600 ω
- R2 = 514 ω
- R3 = 86 ω
- R4 = 1114 ω
- R5 = 680 ω
- R6 = 600 ω
- R7 = 15K

If You Didn't Get This From My Site,
Then It Was Stolen From...
www.SteamPoweredRadio.Com

DR. BY <i>[Signature]</i>	TYPICAL RECORDING CONSOLE SCHEMATIC	ALTEC LANSING
	9200 CONSOLE	9200-10

REVISIONS				
SYM	DESCRIPTION	DATE	APPROVAL	ENGR



If You Didn't Get This From My Site,
Then It Was Stolen From...
www.SteamPoweredRadio.Com

UNLESS OTHERWISE SPECIFIED DIMENSIONS ARE IN INCHES TOLERANCES ON FRACT. 2 PLACE DEC. 3 PLACE DEC.		ORIGINAL DATE OF DRAWING	9200A CONSOLE CROSS SECTION AND COMPONENT LAYOUT	 A Division of GENCO Ling Altec, Inc. ANAHEIM, CALIFORNIA
	DR. BY	D 9200-12 SHEET OF		
	CHKD.			
	ENGR.			
	ENGR.			
NEXT ASSY	USED ON	APPRD.	SCALE	CODE

ALTEC 9200A CUSTOM CONSOLE WORK SHEET

CUSTOMER'S NAME _____		Dept. _____	Date _____
ADDRESS _____		Delivery _____	
CITY & STATE _____			
COMPONENTS	DESCRIPTION	INDUSTRIAL NET PRICE	QUANTITY REQUIRED
9200A	Console Housing		
9201	Console Stand		
9202	Cushion Assembly		
9203	Blank Panel 1-3/4"		
9204	Blank Panel 3-1/2"		
9205	Input Panel, 1-3/4"		
9206	Input Panel		
9207	Master Panel, 1-3/4"		
9208	Panel with lift handle, 1-3/4"		
9209	Slate & Talk back panel, 1-3/4"		
9210	Playback & monitor panel, 1-3/4"		
9211	High Pass/Low Pass filter panel, 3-1/2"		
9212	Pan Pot Panel, 3-1/2"		
9213	Input Panel/Echo		
9214	Input Panel for 2 switches		
9215	Single Pot Panel		
9216	Input Panel		
9223	Transformer Brackets		
9224	Wire Guides		
9225	Multi-Switch, 5 stations		
9226	VU Meter		
9227	VU Meter		
9228	Designation strip		
9229	Jack strip with 20 jacks		
9230	Jack fasteners		
9231	Dual-Multi-Switch, 8 stations		
9232	Terminal strip assembly		
9233	Base Mtg. Bracket Assembly		
9234	Patch cord		
9235	Talkback Key		
9236	Relay		
9237	Cue Key		
9238	Jack		

ALTEC 9200A CUSTOM CONSOLE WORK SHEET

COMPONENTS	DESCRIPTION	INDUSTRIAL NET PRICE	QUANTITY REQUIRED
9239	Instrument Panel		
9240	Jack Cut-out Apparatus Blank		
9241	Main Meter Apparatus Blank		
9242	Echo Meter Apparatus Blank		
9243	Spec. Inst. Panel (Blk Anod.)		
9245	Adapter for 9475A Amp.		
9246	Component Chassis		
9250	1-3/4" Special Panel		
9251	3-1/2" Special Panel		
9252	Spec. Inst. Panel		
9068B	Low Pass Filter		
9069B	Hi Pass Filter		
9061A	Program Equalizer		
9062A	Graphic Equalizer		
9470A	Preamplifier		
9471A	Monitor Amp (20 Watt)		
9475A	Preamplifier		
9476A	Monitor Amplifier (8 Watt)		
9850A	Tray (9470A)		
13401	Tray (9475A)		
9550A	Power Supply		
9852A	Tray (9550A)		
15036	Repeat Coil		
15335	Transformer		
15356	Transformer		
K-241D	Transformer		
677B	Microphone		
RM8354-01-GG	Rotary Mixer		
RM8354-04-GG	Rotary Mixer		
SM8272-01-GG	Straight Line Mixer		
PP8808-0266	Stereo Pan Pot		
VU8701-01VUD	VU Meter Range Extender		
251-05-41	Rotary Switch, 2 pole 5 pos.		
254-03-41	Rotary Switch, 2 pole, 3 pos.		
851-04-41	Rotary Switch, 4 pole, 4 pos.		

ALTEC LANSING

A DIVISION OF *LTV* LING ALTEC, INC.

1515 SOUTH MANCHESTER AVENUE, ANAHEIM, CALIFORNIA • 92803
774-2900 AREA CODE 714

PRICE LIST

Effective February 22, 1970

9200A CONSOLE AND ACCESSORIES

		<u>Industrial Net Price</u>
9200A*	Console Cabinet	\$ 513.00
9201*	Base	380.25
9202*	Cushion Assembly	73.00
9203*	1-3/4" Blank Strip Panel	11.70
	Special 1-3/4" strip panel punched and engraved to customer specifications	Price available on request
9204*	3-1/2" Blank Strip Panel	19.50
	Special 3-1/2" strip panel punched and engraved to customer specifications	Price available on request
9205*	Standard Input Panel	33.00
9206	Input Panel	27.90
9207*	Master Panel	28.50
9208*	Panel with Lift Handle	23.70
9209*	Slate and Talk Back Panel	31.50
9210*	Playback and Monitor Panel	36.00
9211*	High-Pass Low-Pass Filter Panel	46.50
9212*	Pan Pot Panel	34.50
9213	Input Panel	34.50
9214	Input Panel	39.00
9215	Single Pot Panel	27.00
9216	Input Panel	27.75
9223*	Transformer Bracket	2.85
9224*	Wire Guide	1.20
9225*	Switch	54.00
9226*	VU Meter	42.00
9227*	VU Meter	129.75
9228*	Designation Strip	13.00
9229*	Jack Strip	105.00
9230*	Jack Fastener	2.10
9231*	Dual 8 Position Key	79.50

(Continued)

PRICE LIST

9200A CONSOLE AND ACCESSORIES (Continued)

		<u>Industrial Net Price</u>
9232*	Terminal Strip Assembly	\$ 42.00
9233*	Power Supply Mounting Shelf	27.50
9234*	Patch Cord	16.50
9235*	TB Key	27.00
9236*	Relay	13.50
9237*	Cue Key	13.50
9238*	Jack	3.45
9239*	Instrument Panel punched for 4 channel recording console	159.00
9240	Apparatus Blank for Jack Field of 9239	12.00
9241	Apparatus Blank for 9226 Meter Cutout of 9239	6.00
9242	Apparatus Blank for 9227 Meter Cutout of 9239	6.00
9243*	Blank Instrument Panel for 9200A	57.00
	Special Instrument Panel for 9200A punched and engraved to customer's specifications (including mounting details for Altec controls)	Price available on request
9244	Meter (9226) Sub-Panel	16.50
9245	Accessory to Mount 9475A Amplifier	3.00

See regular catalog price list for attenuators, mixers, networks, filters, and equalizers.

Listed above are only most commonly called for items. All other cataloged items are available on order. *Indicates items that normally can be shipped from stock. All other items generally can be shipped within approximately 14 days after receipt of order.



1515 S. Manchester Ave., Anaheim, California 92803

A Division of *SPV* Ling Altec, Inc.

If You Didn't Get This From My Site,
Then It Was Stolen From...
www.SteamPoweredRadio.Com